

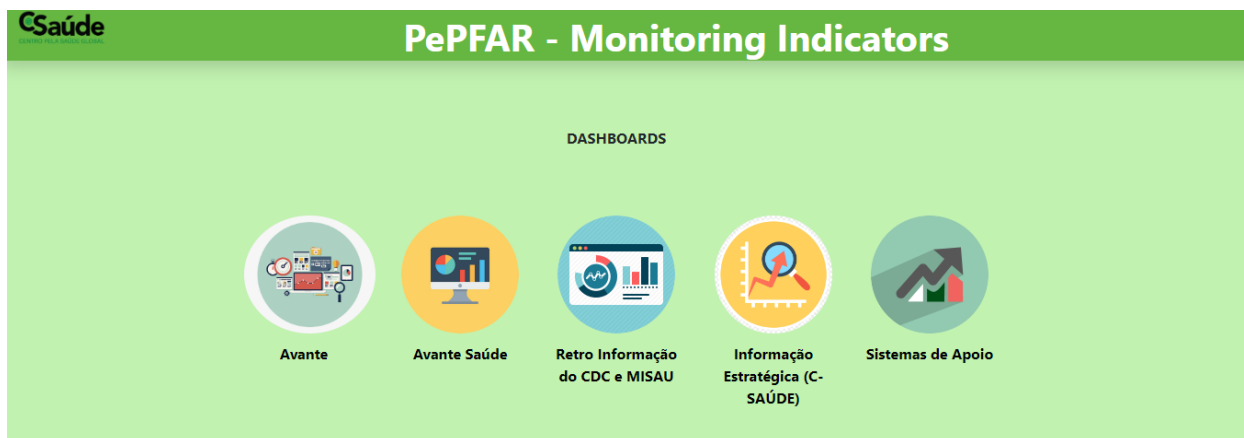
User Manual – PePFAR Dashboards Portal

1. Introduction

Welcome to the Avante Dashboards. This portal was developed to simplify and facilitate access to important information through interactive dashboards. No authentication is required to access the public dashboards, allowing users to view and explore the reports without any obstacles. However, for private dashboards, permission is required, as detailed later in this document.

The goal of this portal is to provide a smooth and efficient user experience, where users can easily access data organized into groups. Upon entering the portal, you will find the following structure:

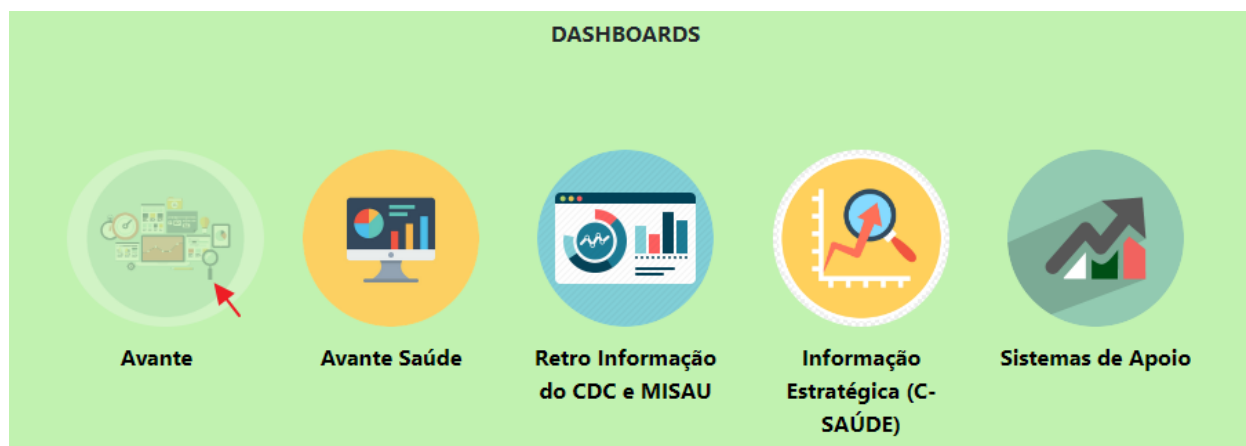
- **AVANTE Group**
- **AVANTE SAÚDE Group**
- **RETRO INFORMAÇÃO DO CDC E MISAU Group**
- **INFORMAÇÃO ESTRATÉGICA (C-SAUDE) Group**
- **SISTEMAS DE APOIO (C-SAUDE) Group**



Each group contains relevant dashboards for different areas of monitoring and reporting. The structure is clear and organized to ensure users can navigate easily.

2. Navigating the Portal

Navigation in the portal follows a clear and organized logic. Below is the detailed flow for the **AVANTE Group**, with the correct structure of groups and subgroups.

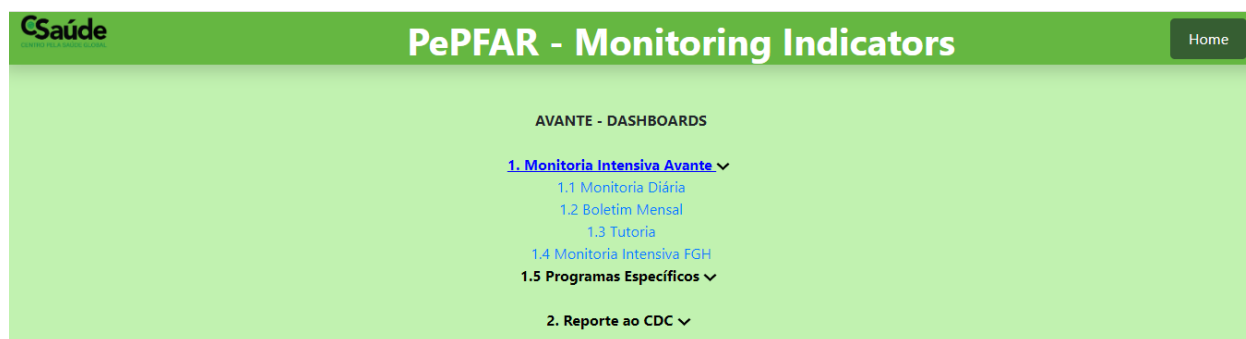


2.1 AVANTE Group

When you access the portal, you will see the **AVANTE Group**, which contains the following direct links to dashboards and subgroups:

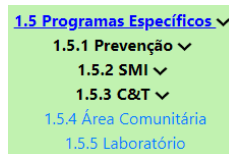
1. Monitoria Intensiva Avante

- This is the main group that houses important dashboards related to the intensive monitoring of the Avante project.
- **1.1 Monitoria Diária**
 - A direct link to the dashboard that shows daily updated indicators of the project, offering a real-time view of progress.
- **1.2 Boletim Mensal**
 - Link to the dashboard that consolidates the project's monthly results into a complete report.
- **1.3 Tutoria**
 - Link to the dashboard that contains data related to tutoring activities and capacity building within the project.
- **1.4 Monitoria Intensiva FGH**
 - Link to the dashboard that displays intensive monitoring indicators, providing detailed information on activities and results.



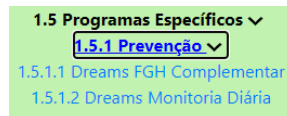
1.5 Programas Específicos

- The " **Programas Específicos** " item is a subgroup that contains several other subgroups of dashboards related to specific programs. Inside **1.5 Programas Específicos**, we have the following subgroups and dashboards:



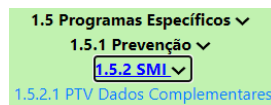
1.5.1 Prevenção (Dreams)

- Within this subgroup, two dashboards are available:
 - **1.5.1.1 Dreams FGH Complementar:** Link to the dashboard that contains complementary data on the DREAMS program within FGH.
 - **1.5.1.2 Dreams Monitoria Diária:** Link to the dashboard that tracks the daily indicators of the DREAMS program.



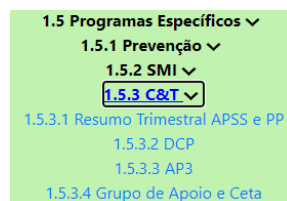
1.5.2 SMI (PTV Dados Complementares)

- **1.5.2.1 PTV Dados Complementares:** Link to the dashboard focused on complementary data for the Prevention of Vertical Transmission (PTV) program.



1.5.3 C&T (Resumo Trimestral APSS, DCP, AP3, Grupo de Apoio e CETA)

- This subgroup contains four important dashboards:
 - **1.5.3.1 Resumo Trimestral APSS:** Link to the dashboard with the quarterly summary of APSS data.
 - **1.5.3.2 DCP:** Link to the dashboard that monitors the Complementary Prevention Data (DCP)
 - **1.5.3.3 AP3:** Link to the dashboard with the indicators of the AP3 program.
 - **1.5.3.4 Grupo de Apoio e CETA:** Link to the dashboard that monitors the activities of support groups and CETA.



1.5.4 Área Comunitária

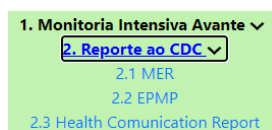
- Link to the dashboard that focuses on activities carried out in the community area of the project.

1.5.5 Laboratório

- Dashboard dedicated to tracking data related to laboratory activities and results.

2. Reporte ao CDC

- The **Reporte ao CDC group** contains dashboards focused on tracking reports for the CDC, with the following items:
- **1.1 MER:** Link to the dashboard Monitoring and Evaluation of Results (MER) dashboard.
- **1.2 EPMP:** Link to the dashboard for tracking indicators of the EPMP.
- **1.3 Health Communication Report:** Link to the dashboard containing health communication reports.



By clicking on any of these titles, the corresponding dashboard will be loaded. The dashboards have interactive filters that allow the user to customize the data view according to their needs. In addition, reports can be exported in PDF or Excel format for offline analysis.

2.2 Other Groups

Other groups follow the same logical structure of navigation, with subgroups organized numerically. Navigation is simple: click on the desired group or subgroup to access the corresponding dashboard:

- **AVANTE SAÚDE:** Contains dashboards like "Intensive Monitoring (MISAU Indicators)" and "Monthly Bulletin."
- **RETRO INFORMAÇÃO DO CDC E MISAU:** Dashboards focused on quarterly reports and retrospective monitoring.
- **INFORMAÇÃO ESTRATÉGICA (C-SAUDE):** Offers internal dashboards on data quality and validation.
- **SISTEMAS DE APOIO (C-SAUDE):** Includes dashboards related to finance, operations, auditing, and human resources.

All groups follow the same logic of numbers and titles, making navigation intuitive. When you click on a group title, you will see the subgroups organized numerically and can select the desired dashboard from the list.

3. Public and Private Dashboards

The portal offers two types of dashboards:

- **Public Dashboards:** These are accessible to any user with the portal link and do not require authentication.
 - **Private Dashboards:** Some dashboards are restricted and require permission for access. If you attempt to access a private dashboard without the necessary permissions, contact the responsible team via email at **powerbi@csaude.org.mz** to request access.
-

4. Technical Support

If you encounter any difficulties navigating or accessing the dashboards, do not hesitate to contact technical support via email at **powerbi@csaude.org.mz**. The team is available to assist with technical and access issues.